

Walnut Grove Villas



STARTING AT

\$919,900

3 FLOOR PLANS

2,050 – 2,700 sq ft

BEDS

2 or 3

BATHS

2+

LOCATION

Shorewood, MN

SINGLE LEVEL LUXURY LIVING IN SHOREWOOD, MN

Walnut Grove Villas is an idyllic neighborhood inspired by the mature walnut trees found on the original property. Enjoy the balance of association-maintained amenities in a community offering spacious lots—all within close proximity to Lake Minnetonka.

THE PERKS OF WALNUT GROVE

UNPARALLELED LOCATION

Located in Shorewood and adjacent to Freeman Park, enjoy easy access to walking and biking trails within the Minnetonka Regional Trail System. In addition, a 10-minute drive presents a variety of entertainment, shopping, and restaurants in the neighboring communities of Excelsior, Wayzata, Victoria, and Chanhassen.

ASSOCIATION MAINTAINED

Included exterior lawn care and snow removal maintenance allows you more time to enjoy your home and neighborhood.

3 CAR GARAGE

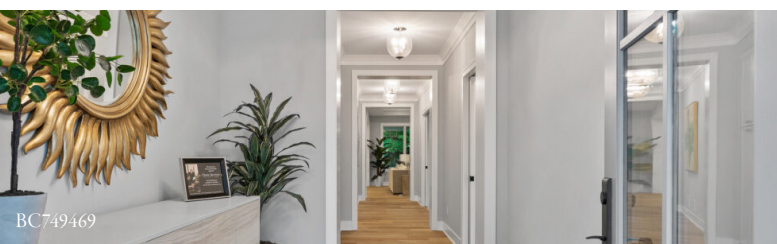
A rare find in detached villas, two of the three plans include 3-car garages for all of your vehicles and toys. We can also convert the third stall into living area should a larger floor plan suit your needs.

SINGLE LEVEL LIVING

Each villa features all of your living spaces on one single level. Two and three bedroom options provide ample living and work-related spaces. Enjoy views of wetlands and wooded areas from your outdoor patio or optional three-season room. No steps provide convenience and ease of access throughout the home. Our two larger plans feature an above-garage unfinished storage area that can be converted to finished and conditioned space.

LUXURY CURATED INTERIORS

Each unit is thoroughly and uniquely designed by our experienced design team for fresh, modern living.



LOTS & HOME PACKAGES

Walnut Grove features three separate floor plans that start at \$919,900. We have identified a set of pre-priced options that can be included into each plan, or we can customize specific layout changes or other options that are desired as part of the home to suit your living needs.

THE MENDOTA	THE MONONA	THE WINGRA
2,650 sq ft	2,350 sq ft	2,050 sq ft

View the community site plan and floor plans on our website:



NEIGHBORHOOD

Layered amongst wetlands and an exceptional landscape, the fourteen private villas of Walnut Grove are located in the Lake Minnetonka area within the City of Shorewood. Enjoy ready access to shopping and entertainment in the destination locations of Excelsior, Wayzata, Minnetonka, and Victoria.

ABOUT THE BUILDER



Terrace Companies is a residential development and construction firm dedicated to creating the finest neighborhoods, homes, and relationships through our passionate focus on the finest architectural design, precision construction, and collaboration with our partners and clients.

FIND YOUR DREAM HOME AT WALNUT GROVE

Walnut Grove Villas – Model
25495 Park Lane
Shorewood, MN 55331

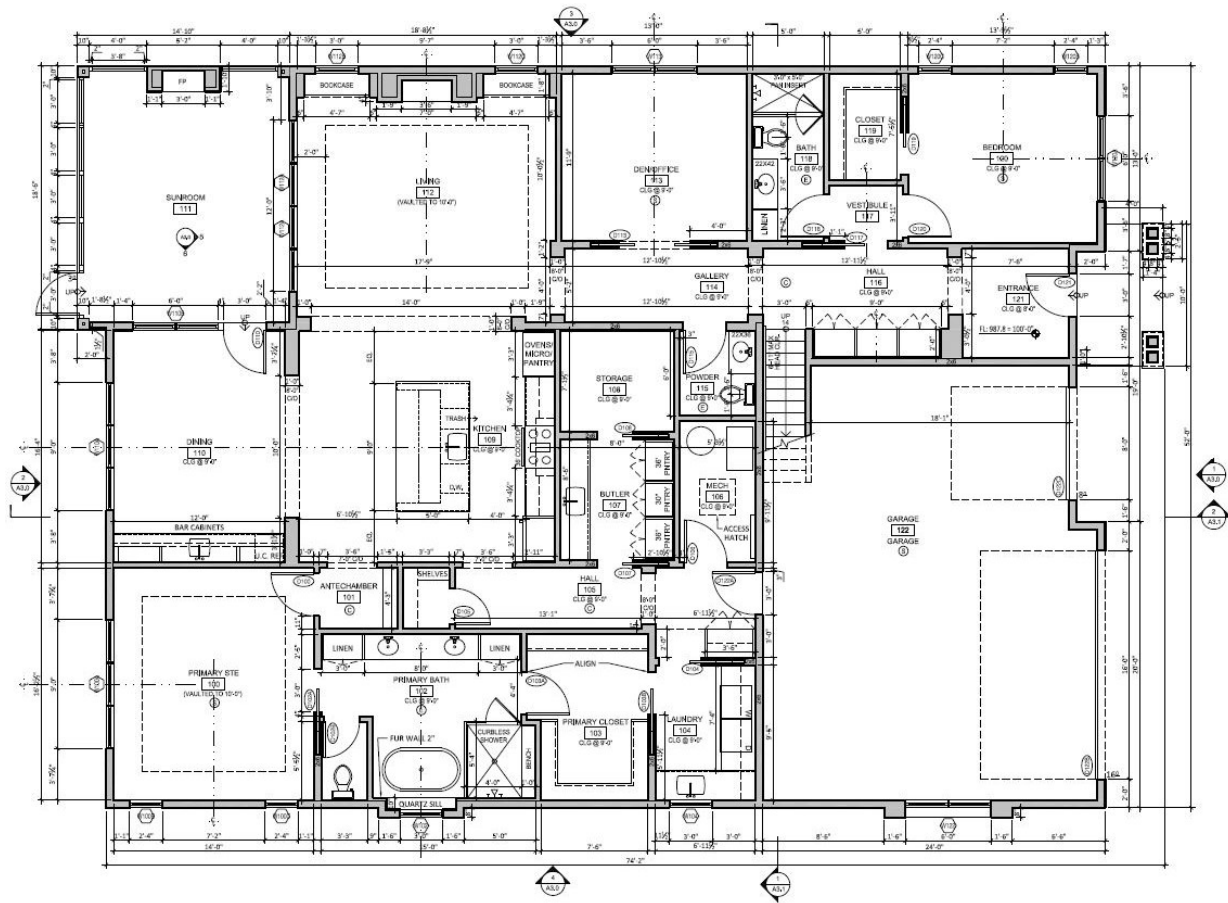
Friday – Sunday
Noon – 5pm
or by appointment

612 802 6948 | tbrown@terracecos.com | terracecos.com

Walnut Grove Villas

Walnut Grove Plan Offerings

The Mendota ~ 2,650 SF, 2 Bedrooms + Den and 3 Car Garage: Starting - \$1,059,000



HOME BUILDING - DEVELOPMENT - REALTY

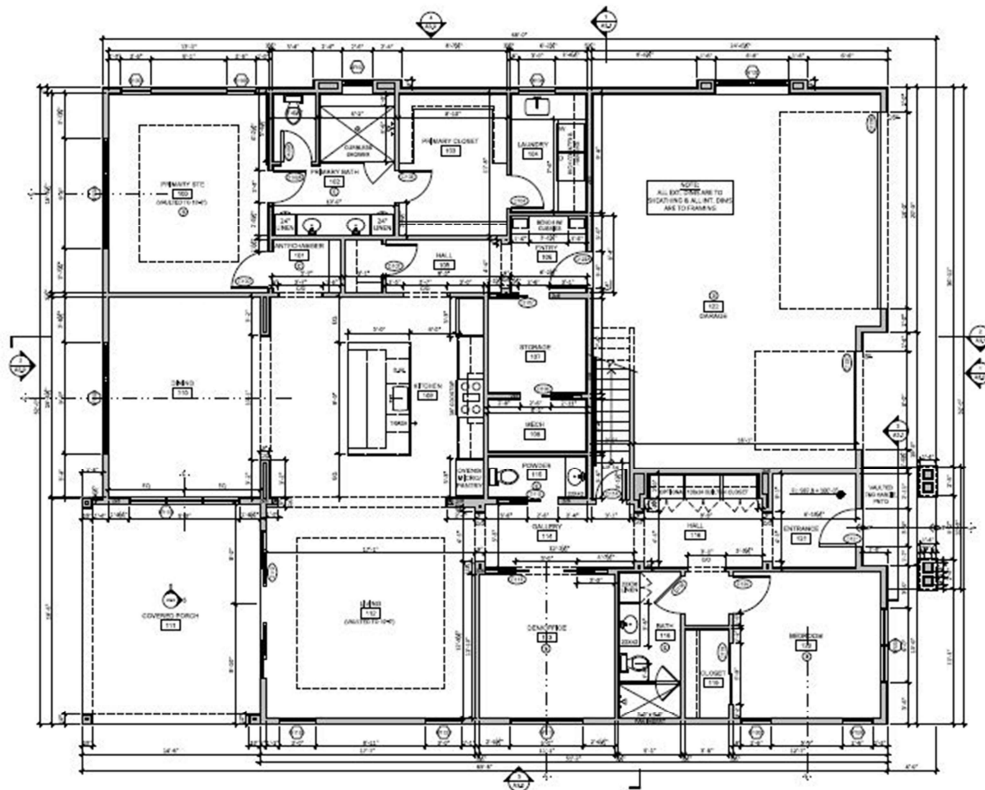
612.802.6948 - tbrown@terracecos.com - www.TerraceCos.com

(MN Builders License BC749469)

Walnut Grove Villas

Walnut Grove Plan Offerings

The Monona ~ 2,350 SF, 2 Bedrooms + Den and 3
Car Garage: Starting - \$989,000



1 MAIN LEVEL PLAN
1/4\"/>



HOME BUILDING - DEVELOPMENT - REALTY

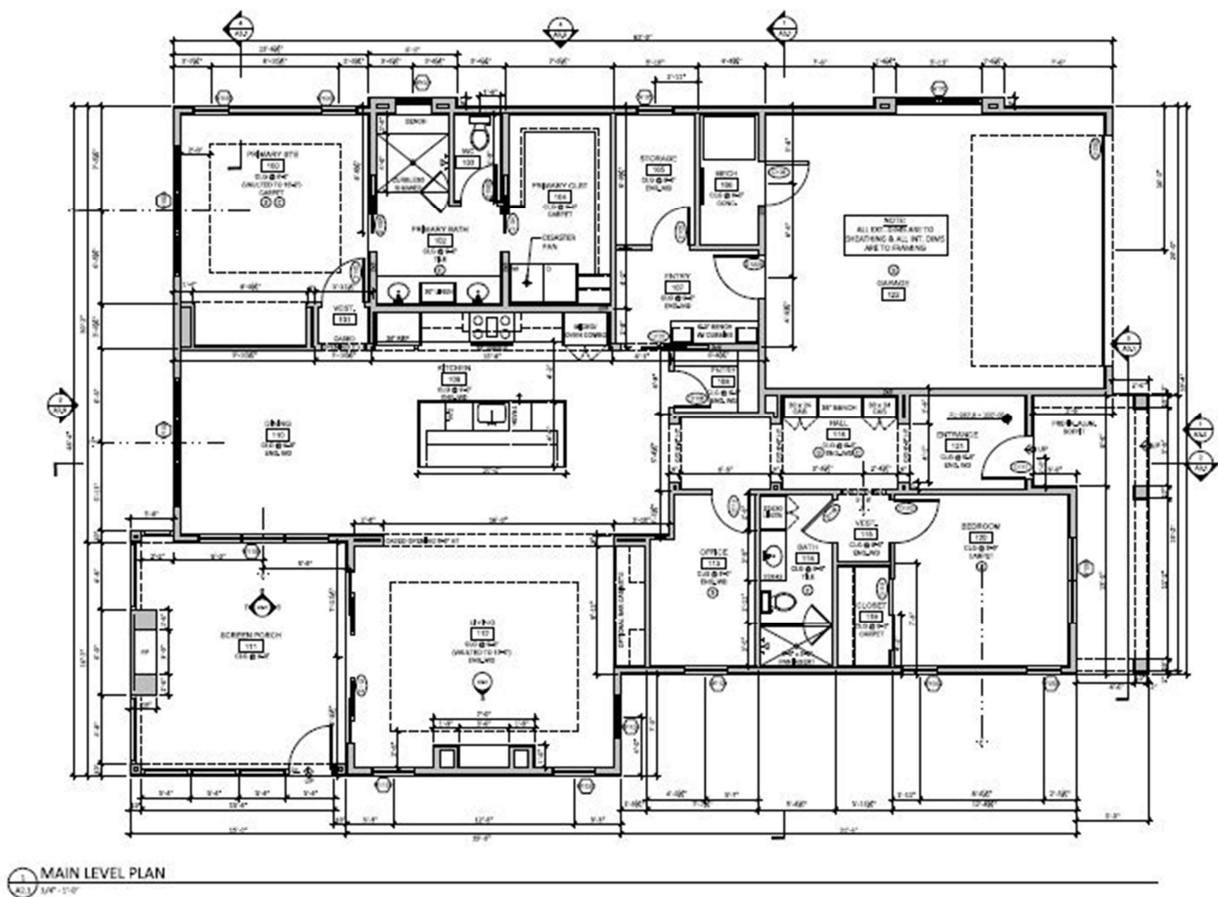
612.802.6948 - tbrown@terracecos.com - www.TerraceCos.com

(MN Builders License BC749469)

Walnut Grove Villas

Walnut Grove Plan Offerings

The Wingra ~ 2,030 SF, 2 Bedrooms + Den and 2 Car Garage: Starting - \$919,000



HOME BUILDING - DEVELOPMENT - REALTY

612.802.6948 - tbrown@terracecos.com - www.TerraceCos.com

(MN Builders License BC749469)

Walnut Grove Villas

Walnut Grove Home Site Availability



HOME BUILDING - DEVELOPMENT - REALTY

612.802.6948 - tbrown@terracecos.com - www.TerraceCos.com

(MN Builders License BC749469)